



STERIPOWER

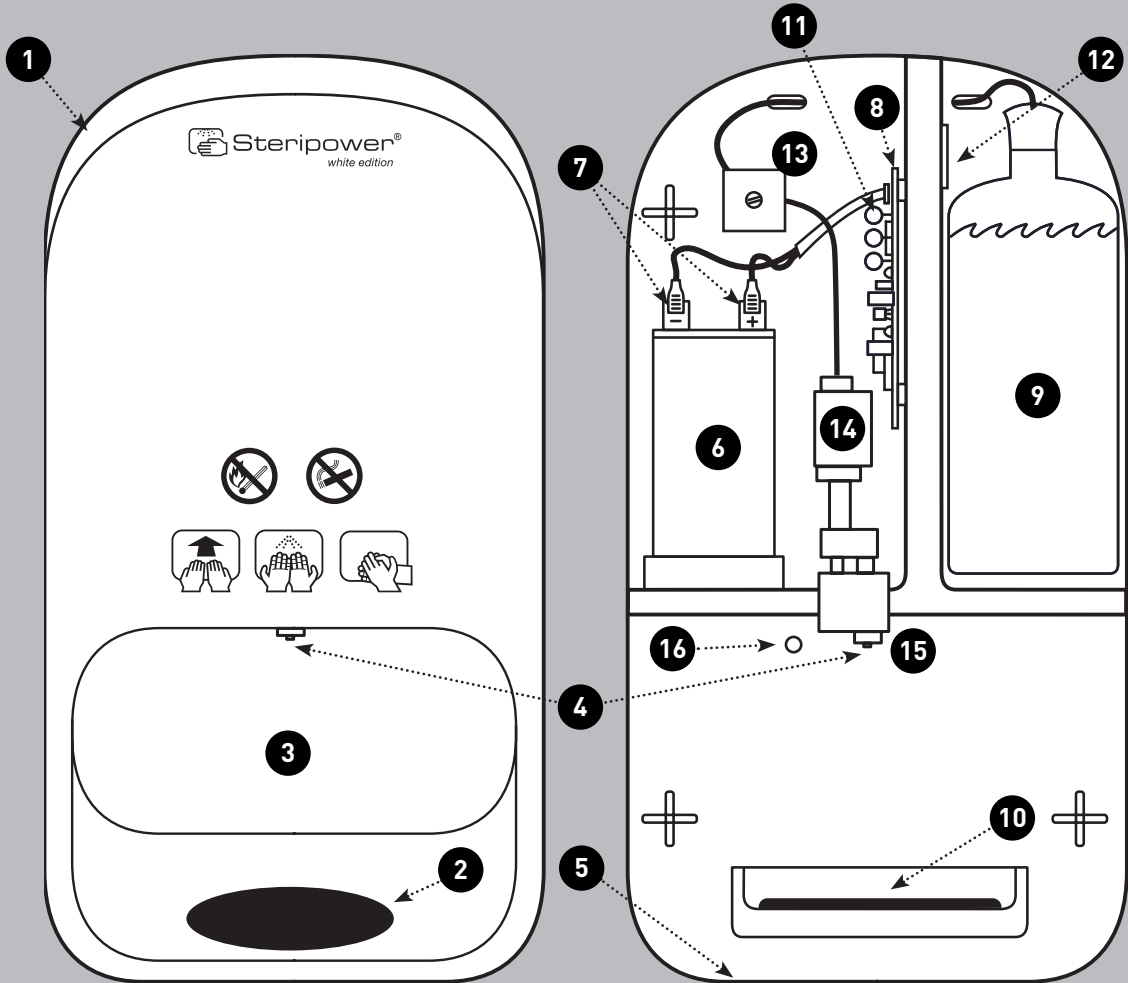
stainless steel edition /
white edition

BEDIENUNGSANLEITUNG
OPERATING MANUAL



Steripower®

Internal view of Steripower 10041 / 10046
 10046 without socket **5** → operation only possible with rechargeable battery!



Available versions

10041 (with rechargeable battery)
 10046 (high-frequency device)
 10047 (with internal power supply unit)

10048 (with internal power supply unit + signalling)
 10127 secure light

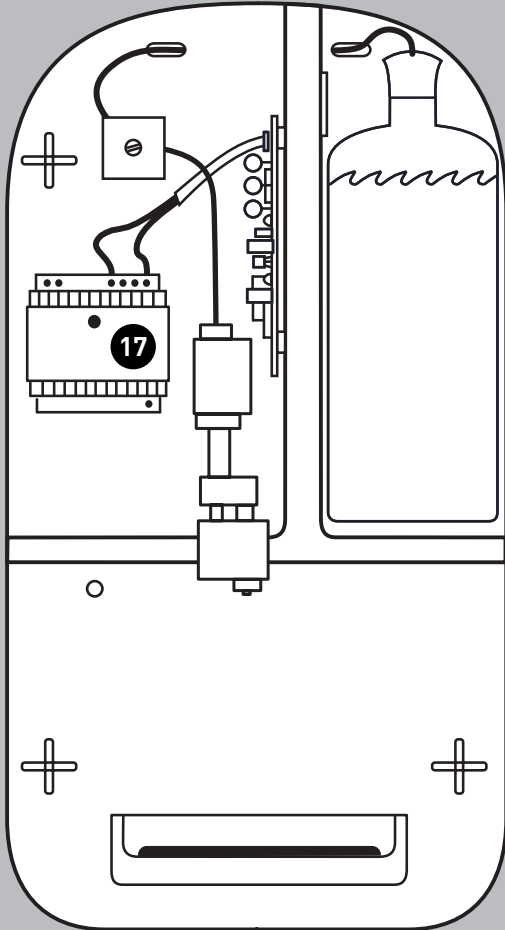
Internal view of Steripower art. 10047
(Steripower with power supply unit)



OVERVIEW & DESCRIPTION

Description of the components*:

- 1 External housing
- 2 Strap for housing opening
- 3 Disinfection area
- 4 Spray nozzle
- 5 Female plug for charging device
- 6 Rechargeable battery
- 7 Plug for rechargeable battery (+/-)
- 8 Printed circuit board
- 9 Space for disinfectant container
- 10 Collecting tray with Medical Pad
- 11 Control lamps LED
- 12 Service label
- 13 Solenoid valve
- 14 Pump unit
- 15 Sensor
- 16 Lid switch
- 17 Integrated power supply unit



INTRODUCTION

This manual provides to the owner and user designated instructions regarding installation, usage and maintenance of the disinfection device. Please carefully read the following instructions before unpacking the device, which

shall contribute to the reliability of the device. The selection of the installation site, placement and installation of the device(s) shall be performed by technical personnel.

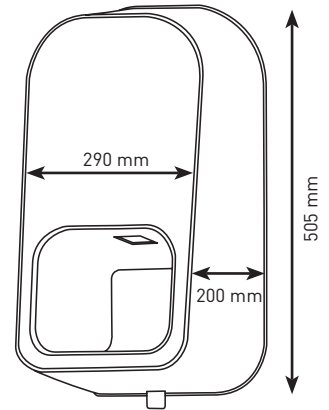
INDEX

Overview and description.....	01
Transport, dimensions and storage	03
Safety rules	04
Description and technical data.....	05
Removal and installation	06
Operation and operating principle.....	08
Maintenance and care.....	12
Electronic system	13
Troubleshooting	14
Operation manual for the lead charging device	16

TRANSPORT

Use the **original packaging** when transporting the device and observe the international information and protection symbols on the packaging during transport and storage!

- ⚠ Set the cardboard box and/or device in this direction only!
- ⚠ Risk of breakage, protect against damage!
- ⚠ Protect against wet conditions!
- ⚠ Do not stack more cardboard boxes than indicated!
- ⚠ Open the packaging on the indicated side; do not use pointed or sharp objects!



DIMENSIONS

Packaging sizes:

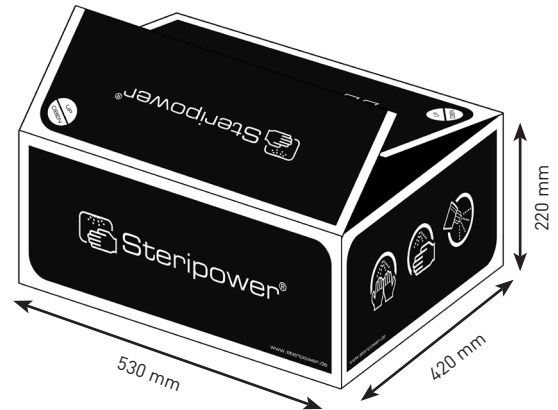
Height 220 mm x width 420 mm x length 530 mm

Device dimensions (approx.):

Height 505 mm x width 290 mm x depth 200 mm

STORAGE

Temperature: -15°C bis +40°C



SAFETY RULES

Steripower® is a very easy-to-operate device which does not require special safety rules.

Before commissioning the device, the following must be observed:

- Please carefully read the manual before operating the device.
- The device must either be installed by the building services department, technical personnel or independently; sufficient technical knowledge is necessary.
- Knowledge relating to the performance and characteristics of the device must be present.
- Only permitted disinfection liquids may be used.
- The general hygiene provisions must be observed.
- The device may under no circumstances be modified (except for genuine spare parts); otherwise, the guarantee will be void.
- Information labels attached to the device which were made illegible must be requested and replaced immediately..
- Use the Steripower and its accessories according to the intended and proper use and as specified by the manufacturer.

DESCRIPTION

Steripower®, the automatic, touch-less hand disinfection device is composed of two main parts.

- **Front cover:**
with inspection windows
- **Rear wall:**
with integrated technology and space for the liquid container

TECHNICAL DATA

• Operating voltage:	12 V
• Motor spray pump:	12 V
• Max. output:	18 Watt
• Spray performance:	0,5 - 5,0 ml
• Liquid containers:	up to 1000 ml
• Dimensions:	505 x 290 x 200 mm
• Weight:	5 kg

SCOPE OF DELIVERY & ACCESSORIES

1 pc.	Steripower®		
1 pc.	Collecting tray		
1 pc.	Operation manual		
1 pc.	Drilling template		
1 pc.	Protective caps rechargeable battery		
1 pc.	Medical Pad		
	Optional accessories:		
	Steripower-Kit		(art. 70007)
	Counter		(art. 13010) S.07
	Board with Signal (e.g. door opener)		(art. 10201)
	LED tunnel illumination		(art. 01705)
	Wall panels		
	Wall displays		
	Stand-up displays		

REMOVAL & INSTALLATION

EN

REMOVAL

Check the packaging for transport damage before removing the device. Do not use pointed or sharp objects to open the packaging. Remove the device and drilling template from the cardboard box.

INSTALLATION

- 1. Removing the front cover:** By vertically pulling the strap on the bottom of the device (refer to pg. 01 / item 2)
- 2. Removing the internal cover:** By slightly pulling with the index finger in the inspection window and simultaneously pulling forward.
- 3. Assembling the rear wall:** Check the installation site for levelness. By means of the drilling template, fix the rear wall to the wall using the dowels and screws. Attach the device at a height of approx. 90 cm above the ground (or 70 cm if predominantly used by children; distance between the bottom of the Steripower and the ground).
- 4. Rechargeable battery connection:** charging is only possible with the cable correctly connected to the rechargeable battery (refer to pg. 01 / item 7).
- 5. Charging procedure:** Plug the charging device from Steripower-Kit (art 70007) into the socket (at the bottom of the device on the left; refer to pg. 01 / item 5). The charging procedure is continued as long as the LED of the charging device is green.
Charging duration approx. 24 hrs.

Attention: The rechargeable battery is not fully charged and must be fully charged before commissioning.



Attention: Risk of electrocution!
The Steripower with integrated power supply unit (art. 10047) must only be installed by technical personnel. Before assembly, disconnect the wall cable from the power supply (e.g. by switching off the fuse).



- 6. Setting the quantity:** The liquid quantity is controlled via a pressure switch. A value of 1.5 ml is pre-set ex works. When pressing the switch, the LED flashes red. **The switch is located on the printed circuit board (refer to pg. 13 / item C).**

Adjustment steps:

The red LED flashes:

1x = 0,5 ml	6x = 3,0 ml
2x = 1,0 ml	7x = 3,5 ml
3x = 1,5 ml	8x = 4,0 ml
4x = 2,0 ml	9x = 4,5 ml
5x = 2,5 ml	10x = 5,0 ml

Should the liquid quantity be too low or too high, fine tuning can be performed by turning a watchmaker's screwdriver to the right or left. (refer to pg. 13 / item L)

INSTALLATION

7. Medical Pad (consumable no. 12021): For sucking away residual liquids and absorbing the steams of disinfectant liquids of any kind.

8. Checking the LED display:

(refer to pg. 01 / item 11)

• **flashing green, 2 seconds intervals:**

Rechargeable battery is ready for operation!

• **red-green simultaneously:**

Recharge battery! Only for Steripower with rechargeable battery (art. 10041 and 10046)

• **flashing red:**

Recharge battery immediately!

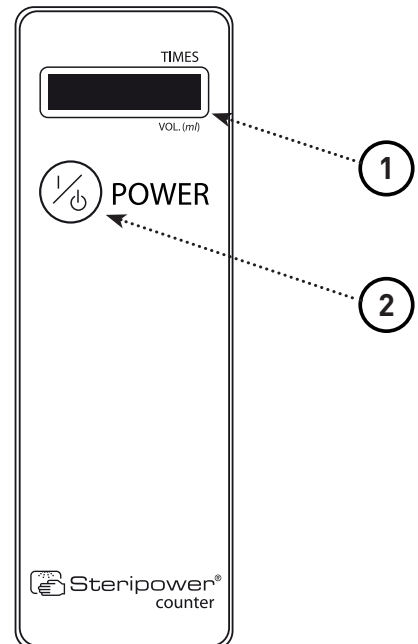
Only for Steripower with rechargeable battery (art. 10041 and 10046)

9. Replacing the rechargeable battery: Please contact the technical personnel or observe the instructions when recharging or replacing the device. Attention: the protective caps of the rechargeable battery serve against short-circuit protection! Only for Steripower with rechargeable battery (art. 10041 and 10046)

10. Closing the device: Put the front cover onto the device at an angle of 90° (straight towards device). Lift above the interlocking at the upper edge, press at the lower part until latched. Check the device for functionality.

11. Counter: (optional art. no. 13010)

Using the counter, the number of sprays already performed as well as the set liquid quantity per spray interval is indicated on a digital display ① in **ml**. Point the counter towards the **(LEDs)** and keep the power button ② pressed. The digital display changes automatically between the indication of **ml** and the indication of sprays performed.



FIELDS OF APPLICATION

The automatic spraying device Steripower® was specifically designed for hand hygiene purposes in order to ensure quick, simple and effective disinfection of the hands.

Fields of application are, for example: hospitals, medical practices, retirement and special-care homes, laboratories, food and pharmaceutical industry, hotel/gastronomy industry as well as public facilities with high foot traffic.

OPERATING THE DEVICE

- Touch-less insertion of the hands into the spray channel, both palms of the hands open and facing up.
- Finger tips bent upwards.
- Once recognised by the sensor, the palms of the hands are automatically sprayed with disinfectant.
- Spray quantity can be set if required (refer to pg. 06 / item 6).
- Remove the hands from the device and rub the liquid for optimal germ elimination.



SPRAY & APPLICATION TIMES

Recommended spray quantity in ml and application time in min:

- hygienic hand disinfection: at least.: **3 ml** (quantity)
- surgical hand disinfection: at least.: **5 ml** (quantity)

The hands must be sprayed and/or kept humid according to the specified application time of the alcoholic hand disinfectant. Observe the manufacturer's requirements!

The spray quantity can be set in steps of 0.5 ml from 0.5 ml to 5 ml (refer to pg. 6 / item 6).

DISINFECTION OF HANDS WHEN HANDLING FOOD

Disinfecting the hands is required to avoid contamination of food with germs of any kind.

Disinfection must be performed, for example, following:
Eating, visits to the toilet, smoking, raw material change - chicken, vegetables, egg, etc. in order to avoid transfer of germs.

Touching the food with disinfected hands does not affect the food. Hands that are not disinfected, however, can contaminate the goods by applying the germs.
Germs do proliferate very quickly.
(e.g. salmonella - cell division every 20 min.)!

REPLACING THE LIQUID CONTAINER

- Pull down the strap at the bottom of the cover.
- Remove the front cover by slightly lifting and then pulling it off towards the front.
- Remove the plug and pull the suction pipe out of the empty container.
- Insert the suction pipe with the plug into a full container (up to a maximum of 1000 ml) and slightly press the plug.
- If the package size is changed, slide the plug up or down the suction pipe.
- Always cover the liquid container with the plug in order to avoid evaporation of the liquid.
- Move the front cover horizontally towards the device, put it on at the top, and press the lower part until latched.
- Have the liquid sucked into the device by triggering the sensor several times.

SPECIAL NOTE

If the device was not used for a longer period, first rinse with pure alcohol several times in order to remove clogs or, if required, replace the hoses.

GENERAL NOTES

Before opening the hood, disconnect the Steripower from the power supply if the device is directly connected to the mains (art. no. 10047), e.g. by switching off the fuse!



- Before performing maintenance works or in order to disconnect the device from mains operation, the power supply must be disconnected by pulling the mains plug and/or switching off the fuse. In order to avoid damage to the power cable, make sure to pull on the mains adapter and not on the cord. The mains plug should be easily accessible.
- Only use the genuine charging device and power supply unit with this disinfection device. Do not under any circumstances use a damaged charging device or power supply unit. If the charging device or power supply unit are defective or damaged, they may only be replaced by a genuine spare part.
- The rechargeable battery must be disposed of in a proper manner and not via household waste. Rechargeable batteries can be disposed of in collection centres of the public waste management organisations.
- If used frequently, it is recommended to replace the Medical Pad in the collecting tray. This ensures that overfilling and frequent use don't require the removal of liquid residues or ventilation of the room and the risk of ignition due to ignition sources is lowered. We recommend the change of the medical pad bimonthly.
- Do not smoke when the device is in use!

DISINFECTANTS

Alcohol (ethanol, isopropanol, N propanol) with +/- 70% alcohol content has the best proven effect in disinfectants, i.e. all common alcoholic hand disinfectants with approval.

MAINTENANCE & CARE

Only have maintenance works performed on technical or electronic parts of the device by technical personnel or the building services department. Only use genuine spare parts. Do not modify the device without talking to the manufacturer.

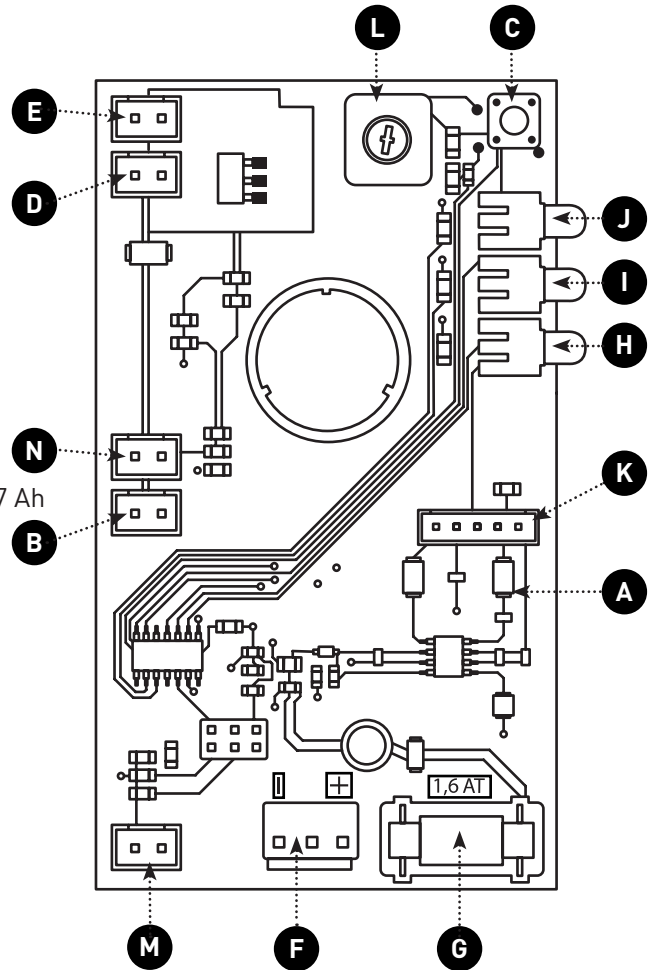
- Keep the device clean. Clean the device with a soft cloth and a commercially available detergent, and the stainless steel device with stainless steel detergent.
- Do not wash with water; do not use pressurised air and solvents in order to remove dirt or residues.
- If the device is to be reused after a long period not in use, rinse the system several times with pure alcohol. This is done in order to remove possible clogging.

Charge the rechargeable battery for 24 hrs and then loosen the positive pole and secure it with a protective cap (yellow)!

ELECTRONIC SYSTEM

Listing of the components:

- A** Printed circuit board (electronics)
- B** Plug for LED ready lamp
- C** Pushbutton for liquid quantity regulation (0.5 - 5 ml)
- D** Plug for motor pump
- E** Plug for non-return valve
- F** Plug for rechargeable battery 12 V - 7 Ah
- G** Fuse 1.6 A (delayed-action fuse)
- H** LED green (for operation)
- I** LED red (signal)
- J** LED blue (counter)
- K** Sensor
- L** Fine tuning
- M** Plug for cover contact
- N** Plug for LED activity lamp



- !** In the case of a malfunction of the device, **do not** send it to us for repairs if you have not contacted your authorised dealer or the service hotline. Troubleshooting is usually possible by **service telephone under +49 (0) 8151 / 555 15 27**.

QUESTIONS & ANSWERS

Red LED display flashing. Device no longer functions!

- Charge or replace rechargeable battery.

No LED display!

- The rechargeable battery is fully discharged, replace or recharge if required.
- Fuse (refer to pg. 13 / item G) on the printed circuit board is defective, replace with 1.6 ampere T fuse (delayed-action fuse) if required.

There is no or only irregular spraying activity!

- Check liquid level, refill if required.
- Check if the motor is working (motor-pump unit).
- Check all liquid hoses for air bubbles / correct connection.
- Red nozzle at the pump is clogged. Loosen the pump latching and press from bottom to top. Screw off the red nozzle and clean the tiny hole of the jet opening with a thin needle. Screw on the red nozzle and adjust the correct spray jet (cone-shaped) by screwing down or unscrewing. Then, insert the pump in the support and lock it in position.
- If the measures taken are unsuccessful, inform the service.
(refer to service label pg. 01 / item 12)

The liquid quantity is too high or too low!

- Regulate the spray quantity with pushbutton C.
(refer to pg. 13 / item C and pg. 06 / item 6 - Setting the quantity)

QUESTIONS & ANSWERS

How is the device operated?

- The device is operated with the rechargeable battery (art. 10041).
- The device can be operated with the rechargeable battery (art. 10041) and the charging device plugged into a socket. The rechargeable battery continues to operate the device even in the case of a power failure.
- The device can be operated with an internal power supply unit (art. 10047) without the rechargeable battery.
- The customer has the possibility to recharge simultaneously the additional rechargeable battery with the external charging cable and the charger. Available in the Steripower-Kit (Art.-No. 70007)

Recommendation: if you charge the rechargeable battery of the device for 24 hrs every 4 weeks (with approx. 100 usages per day), you can avoid malfunctions!

The device is constantly dripping!

- The valve must be replaced. Request valve (art. 11150) or contact service hotline (refer to service label pg. 01 / item 12)

Liquid is leaking out of the device!

- Medical Pad (art. 12021) in the collecting tray is no longer absorbent and must be replaced. It must be ensured that the black panel is attached with the flat side to the device wall.

Recommendation: Replace the Pad after 3-4 bottles (or after 2 months at the latest).

The device cannot be charged!

- Contact our service at service@steripower.de or **+49 (0)8151 / 555 15 27**

The device itself triggers sprays without hand insertion!

- Contact our service at service@steripower.de or **+49 (0)8151 / 555 15 27**

TECHNICAL DATA

- For 12 V rechargeable lead (Pb) batteries
- Electronic protection against reverse polarity
- Electronic protection against overloading
- Electronic protection against short circuit
- Charging according to IUoU characteristic
- Automatic additional charge - floating charge
- Charging device can be used worldwide (100-240 V AC)

LED

The LED signals the following conditions:

LED lights red: in the case of reverse connection

LED lights green: during charging procedure, goes out when finished

CAUTION

Only charge rechargeable batteries, there is a „risk of explosion“ when using batteries of another type! Apply electrical contact to the 12 V rechargeable lead battery, observing the positive and negative pole.

TERMINAL ADAPTER

Apply electrical contact between the adapter cable and the charging plug of the device. Connect the terminals to the rechargeable lead battery observing the positive and negative pole. Connect the black terminal with the negative pole (-) and the red terminal with the positive pole (+).

Plug the charging device into the wall socket. Once the electrical contact is applied, the charging procedure starts automatically. The LED flashes green and indicates the charging procedure. Once the charging procedure is completed, the LED turns off. The rechargeable battery continues to be buffered with a float charging current following the charging procedure. Once the charging device is disconnected from the mains, the rechargeable battery can be disconnected from the charging device.

READINESS AND PARALLEL OPERATIONAL WARNING

Explosive gases could be generated when charging rechargeable lead batteries. Please ensure sufficient ventilation and avoid fire and/or naked lights.

CARE

Cleaning works may only be performed when the device is disconnected from the power supply. The device must only be cleaned with a dry cloth. Do not put the device into operation when the housing or the mains plug is damaged. In case of defects, please contact an authorised dealer or **service@steripower.de**

WEAR PARTS

Wear Parts, like the rechargeable battery and the pump, are excluded from the warranty.

SAFETY NOTE

The charging device may only be operated in closed and dry rooms. In order to exclude the risk of fire or the risk of an electric shock, the device must be protected against humidity.

SERVICE

eMail: **service@steripower.de**

Telefon: **+49 (0)8151 555 15 27**

or contact your authorised dealer

EG-Konformitätserklärung nach Artikel 10.1 der Richtlinie 89/336/EWG (EWG-Richtlinie)
EC-Declaration of Conformity acc. to Article 10.1 of the Directive 89/336/EEC (EMC-Directive)
Déclaration de conformité CEE selon l'article 10.1 de la directive 89/336/CEE (Directive EMC)

Steripower GmbH & Co. KG
Schiffbauerweg 1
D-82319 Starnberg (Germany)

Name und Anschrift des Herstellers oder des in der EU niedergelassenen Inverkehrbringers
Name and address of the manufacturer or of the introducer of the product who is established in the EU
Nom et adresse du fabricant ou de la personne résidant dans la CEE qui introduit le sous-dit produit de la CEE



erklären in alleiniger Verantwortung, dass das Produkt
herewith take the sole responsibility to confirm that the product
soussignés déclarons de notre seule responsabilité que ce produit

Touchless Hand-Disinfection unit
Steripower® / white edition / stainless steel edition

Typenbezeichnung und ggf. Artikelnummer
Type designation and, if applicable, article no.
Type, nom et - si nécessaire - no d'article du produit

mit den folgenden Normen bzw. normativen Dokumenten übereinstimmt
is in accordance with the following standards or standardized documents
est conforme aux normes ou spécifications Européennes suivantes

1. EN 61 000-6-3:2001

EN 61 000-3-2:2000

EN 61 000-3-3:1995+A1:2001

2. EN 61 000-6-1:2001

Störaussendungen EMA (RF emission)

Oberschwingungen (harmonics)

Spannungsschwankungen (flicker)

Störfestigkeit (immunity)

Folgende Betriebsbedingungen und Einsatzvolumen sind vorauszusetzen
The following operating conditions and installation arrangements have to be presumed
Les conditions d'opération et d'installation suivantes sont à respecter

In normal operation mode, no battery charger is connected

Dieser Erklärung liegt zugrunde der Prüfbericht
This confirmation is based on testreport
Cette confirmation est basée sur report de test

21108246_001 TÜV Rheinland Product Safety GmbH, 51101 Köln, Allemagne

Name, Anschrift, Datum und Unterschrift des rechtsverbindlichen Verantwortlichen
name, address, date and legally binding signature of the person being responsible
Nom, adresse, date et signature de la personne responsable



Mr. Jan Rombach • 01.12.2003
Steripower GmbH & Co. KG • Schiffbauerweg 1
D-82319 Starnberg (Germany)

STERIPOWER GmbH & Co. KG
Schiffbauerweg 1 • D-82319 Starnberg
www.steripower.de • info@steripower.de

Steripower®