

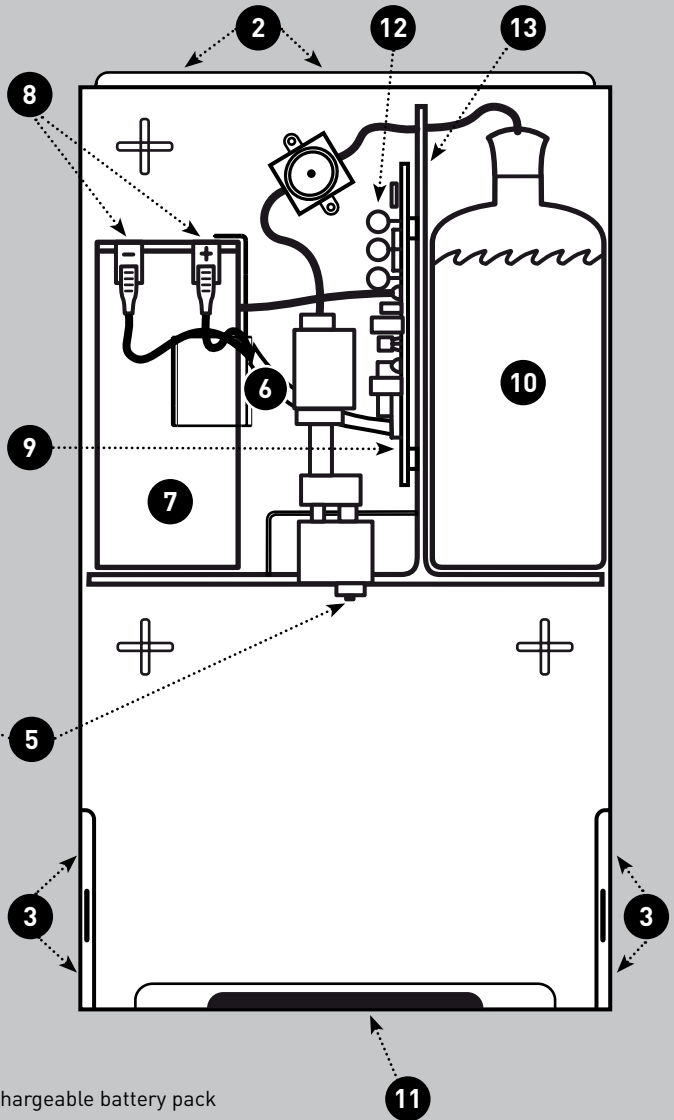
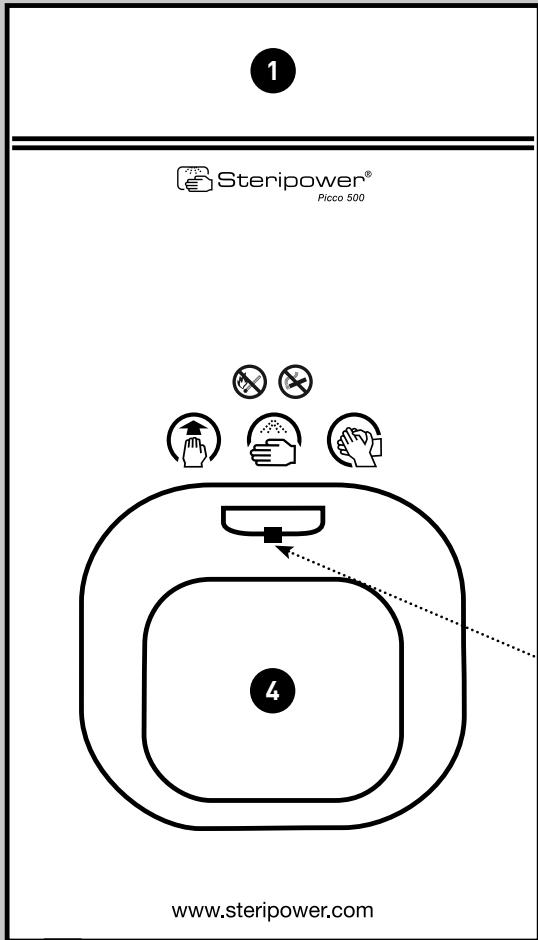


STERIPOWER Picco500

BEDIENUNGSANLEITUNG
OPERATING MANUAL



Steripower®



Internal drawing of Picco 500 10141 / 10146

10146 without charging socket 6 → operation only with rechargeable battery pack

AVAILABLE VERSIONS

40141 (with rechargeable battery)

40146 (high-frequency equipment)



Steripower®

OVERVIEW & DESCRIPTION

Description of the components*:

- 1 Cover

- 2 Cover locking device

- 3 Opening rail

- 4 Desinfection area

- 5 Spray nozzle

- 6 Female connector for battery charger (not for 40146)

- 7 Battery/rechargeable battery

- 8 Plug for battery (rechargeable) (+/-)

- 9 Circuit board

- 10 Liquid container

- 11 Collecting pan with suction pad

- 12 LED control lights

- 13 Type plate

*The technical drawing for illustration purposes is printed on the inside of the cover!

INTRODUCTION

This manual offers the owner and the operator specific directions for the installation, use and maintenance of the disinfection device. Please read the following instructions thoroughly before unpacking the device be-

cause they are important for the reliable and efficient operation of this appliance. The selection of the place of installation, the setup and the installation of the device or devices should be carried out by qualified personnel.

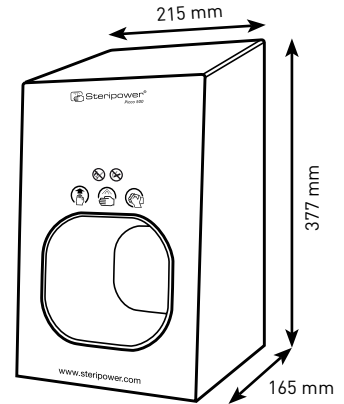
INDEX

Overview and description.....	01
Transport, measurements and storage	03
Safety instructions	04
Description and technical data.....	05
Unpacking and installation.....	06
Operation and function	08
Care and maintenance.....	12
Electronic equipment	13
Troubleshooting	14
Operating instructions for the lead charger.....	16

TRANSPORT

Use the **original packaging** of the unit for transport and observe the international guideline and safety signs on the packaging during transport and storage!

- ⚠ The box and/or the device must only be set up or hung up in this position!
- ⚠ Danger of breakage, protect against damage!
- ⚠ Protect against moisture!
- ⚠ Do not put more cartons than indicated on top of each other!



MEASUREMENTS

Packaging size:

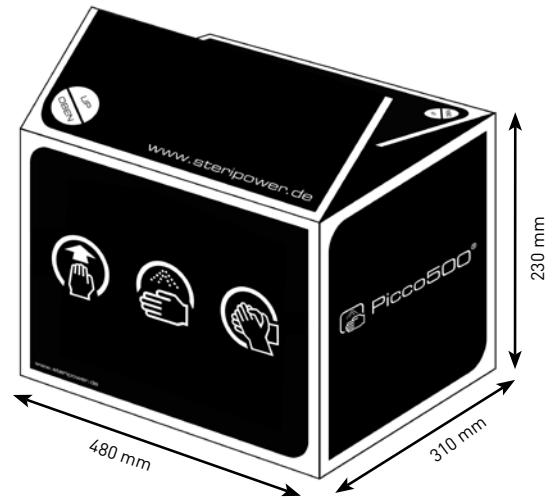
Height 230 mm x width 480 mm x depth 310 mm

Unit measurements:

Height 377 mm x width 215 mm x depth 165 mm

STORAGE



Temperature: -15°C to +40°C



SAFETY INSTRUCTIONS

Picco500® is an easy to use device which is to be used for the intended purpose.

Before the initial operation of the device, the following must be observed:

-  During transport, both battery poles must be protected by means of protective caps (included).
-  Do not let the battery poles touch the stainless steel.
 - Please read the manual thoroughly before starting up the device.
 - The installation of the device must either be carried out by maintenance department staff, specialised personnel or on your own if you have sufficient technical knowledge.
 - Knowledge about the capacity/output and characteristics of the device is required.
 - Only use liquid hand disinfectants which have been developed and approved for this purpose by disinfectant manufacturers.
 - Always observe the safety instructions and instructions for use from the disinfectant manufacturer!
 - The device must not be altered in any way, otherwise the warranty becomes void.
 - Signs on the device which become illegible must be ordered anew and replaced.

DESCRIPTION

Picco500®, the automatic, hands-free hand disinfection device, consists of two main parts made of stainless steel.

- **front cover:**
with viewing slot for checking the liquid level
- **back wall:**
with integrated technical parts and space for the liquid container

TECHNICAL DATA

• operating voltage:	12 V
• spray pump motor:	12 V
• max. output:	18 W
• adjustable spraying quantity:	0,5 - 5,0 ml
• liquid containers:	up to 500 ml
• measurements:	H377xW215xD165mm
• weight:	6 kg

SCOPE OF SUPPLY & ACCESSORIES

1 pc.	Picco 500 without disinfectant	Optional accessories:
1 pc.	charger (not for 40146)	- counter (S.07 / item 13) (item no. 13010)
1 pc.	collecting pan	- signalling system (item no. 01704)
1 pc.	assembly/operating manual	- LED tunnel lighting (item no. 01705)
1 pc.	drilling template	- wall plates
1 pc.	battery protection caps	- wall displays
1 pack	screws/anchors	- stand systems
1 pc.	medical pad	

UNPACKING

Check the unit for any transport damage before unpacking. Take the device, battery, drilling template, screws and anchors as well as the charger for item 40141 out of the box.

Please note: The battery is not fully charged and has to be charged completely before initial operation.



INSTALLATION

1. Opening the Picco500:

- lift the cover on both sides
- release the locking device while doing so ❷
- lift the cover off the opening rail on the back wall ❸
- if necessary, the cover can be separated from the back wall by expanding it on both sides

2. Picco500 as a standalone device:

no installation required

3. Picco500 as a wall-mounted appliance:

Fasten the back wall on the wall using the drilling template. Make sure that the place of installation is even.

- ### 4. Connecting the battery:
- Connecting the battery: Take the battery out of the packaging and put it into ❶ then connect the terminals of the positive (red) and negative (black) pole one after the other. For this step, the yellow protection caps must be removed beforehand.

The battery can only be charged when it is correctly connected to the cables. ❸
Make sure to use insulator caps.

- ### 5. Charging process:
- Connect the charger to the charging socket ❹ (wall-mounted device) or to the (stand-alone device). **Charging time c. 24 hours.** The device can be operated during the charging process.
- ### 6. Quantity adjustment:
- The spray liquid quantity is adjusted by means of a push-button. The factory setting is 1.5ml. Every time the button is pressed, the LED lights up red. **The switch is located on the circuit board (see p. 13 / item C)**

❶ - Item on the illustration on page 1.

INSTALLATION

Adjustment levels:

The red LED flashes:

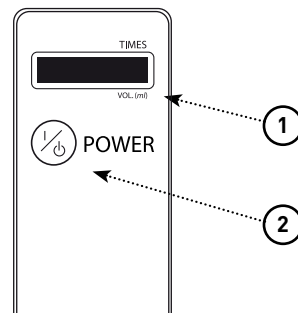
1x = 0,5 ml	6x = 3,0 ml
2x = 1,0 ml	7x = 3,5 ml
3x = 1,5 ml	8x = 4,0 ml
4x = 2,0 ml	9x = 4,5 ml
5x = 2,5 ml	10x = 5,0 ml

If the amount of liquid is too high or too low, fine tuning can be carried out using a watchmaker's screwdriver and turning it to the right or to the left (see p. 13 / item L)

7. **Medical Pad:** (consumable item no. 12020) for absorbing residual liquids or fumes from disinfecting liquids of all kinds
8. **Check the LED signal:** (see p. 01 / 12)
 - **flashing green every 2 seconds:**
Device is ready for operation!
 - **flashing red and green at the same time:**
Charge battery!
 - **flashing red:**
Charge battery immediately!
9. **Replacing the battery:** please request specialised staff or observe the instructions for

charging or replacing the battery. Please note: the battery protection caps serve for short circuit protection.

10. **Closing the device:** Push the front cover into the opening rail on the back wall. Lift it slightly in order to secure it in the fastening rail.
11. **Counter:** (optional - item 13010) The counter shows the number of already performed spray pumps as well as the pre-set spraying quantity in **ml** on a digital display. ①
For this purpose, point the counter to the **(LEDs)** and press and hold the power button. ②
The display automatically switches between the display for **ml** and for the spray pumps up to now. **On the Picco500, the front cover must be opened for reading the values!**



APPLICATION FIELDS

The automatic sprayer Picco500® was developed especially for hand disinfection in order to allow for disinfecting hands extremely quickly and efficiently. Application fields include: hospitals, surgical wards, medical practices, nursing homes, laboratories, food and pharmaceutical Industries, as well as hotels and gastronomy businesses.

OPERATING THE DEVICE

- Hold one hand inside the spraying channel without touching the device; palm facing up.
- Angle your fingertips upwards.
- The hand is detected by sensors and the palm is automatically sprayed with disinfectant
- The spraying quantity can be adjusted as needed (see p. 06 / item 6)
- - Take the hand out of the device.
- Repeat this process with the other hand
- Rub disinfectant in according to manufacturer's instructions



SPRAYING & CONTACT TIMES

Recommended spraying quantity in ml and contact times in min:

- hand disinfection for hygiene: min.: **3 ml** (recommendation 1.5ml per hand)
- hand disinfection for surgery: min.: **5 ml** (recommendation 2.5ml per hand)

The hands must be sprayed and/or kept moist according to the indicated contact times for the alcoholic hand disinfectants.

Please always observe the manufacturer's instructions!

The spraying quantity can be adjusted in steps of 0.5ml to up to 5ml (see p. 06 / item 6).

HAND DISINFECTION FOR HANDLING FOOD

The aim of disinfecting your hands is to prevent the contamination of foodstuffs with germs of any kind.

For example, disinfection must be performed after: eating, going to the toilet, change in raw materials - chicken, vegetables, eggs, smoking, etc. in order to prevent the transmission of germs.

Touching the food with hands which have been disinfected with disinfectants recommended for this purpose does not result in any deterioration of the foodstuffs. Whereas not disinfected hands can contaminate the goods by transmitting germs. Germs reproduce extremely quickly. (e.g. salmonella - cell division every 20 minutes!)

CHANGING THE LIQUID CONTAINER

- Open the front cover (see page 06 / item 1).
- Remove the suction tube with the plug from the empty liquid container and replace it with a full container with max. 500ml.
- Insert the suction tube with the plug in the full container and carefully press against the plug so that the disinfectant cannot evaporate.
- If the package size has changed, move the plug on the suction line upwards or downwards.
- Close the front cover. (see page 07 / item 10).
- Take the liquid up into the device by activating the sensor several times.

IMPORTANT NOTE

If the device has not been used for an extended period of time, flush several times with pure alcohol in order to remove any deposits

GENERAL INSTRUCTIONS

- No open fire; avoid flying sparks!
- Hands of children under the age of 6 should only be disinfected under adult supervision!
- Before any maintenance work or in order to separate the device from the mains, the power supply must be disconnected by pulling the power plug out of the socket. In order to avoid damage to the power cable, make sure to always pull the power plug out by the power adapter itself and not by the cable. The power plug should always be easily accessible.
- Only use the battery charger or power supply unit provided with this product. Do not use similar devices from other products. Never use a defective battery charger or power supply unit. If the battery charger or power supply unit is defective or damaged, it must only be replaced with an original spare part.
- The battery must be disposed of correctly and must not be thrown away with normal household waste. Batteries can be disposed of at the public waste disposal facilities offered by the communities.
- In case of frequent use, we recommend changing the medical pad inside the collecting pan. This eliminates the need to remove liquid residues and air the room, as well as the risk of sources of ignition, after overdosage and frequent use.
- Do not smoke while using the appliance!

CARE & MAINTENANCE

Maintenance on the technical or electronic part of the device should only be carried out by specialised personnel or maintenance department staff. Only use original spare parts. Do not carry out any alterations on the device without consulting the manufacturer beforehand.

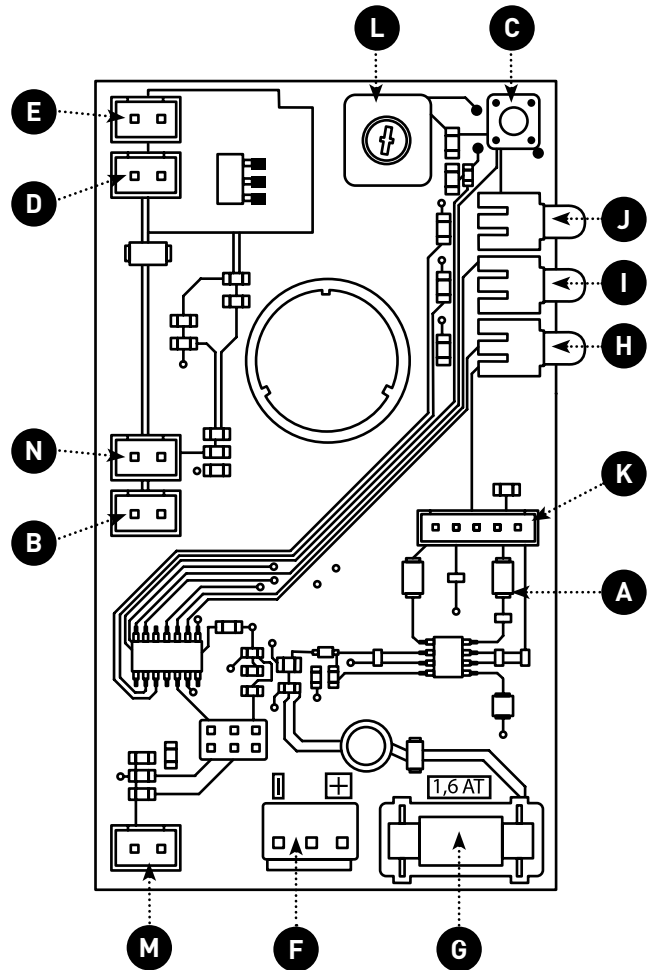
- Keep the appliance clean. Clean the device using a soft cloth and a commercially available cleaner/care product for stainless steel
- Do not hose down with water; do not use pressurized air or solvents to remove dirt or residues.
- The device should be flushed several times with pure alcohol if it is not to be used for an extended period of time and before reuse. This way, any possible deposits are removed..

Charge the battery continuously for 24 hours and disconnect the positive pole!

ELEKTRONISCHE ANLAGE

List of components:

- A** circuit board (electronics)
- B** connector for LED signal lamp
- C** Dpush button for liquid quantity adjustment (0,5 - 5 ml)
- D** connector for motor pump
- E** connector for check valve
- F** connector for battery 12V - 7Ah
- G** 1.6A fuse (delayed action)
- H** green LED (for operation)
- I** red LED (signal)
- J** blue LED (counter)
- K** sensor
- L** fine tuning
- M** connector for cover contact
- N** connector for LED activity lamp



- !** In case of malfunctions, please do **not** send in the device for repairs without contacting the authorized dealer or the service hotline beforehand. Troubleshooting and error handling is often possible by contacting the **service line +49 (0)8151 / 555 15 27**.

QUESTIONS & ANSWERS

The red LED signal flashes. The device does not function anymore!

- Charge or replace the (rechargeable) battery.

No LED indication!

- Battery is completely discharged; replace or charge if need be.
- Fuse (see p. 13 / item G) on the electronic board is defective; replace with a 1.6 Ampere fuse T (delayed action) if need be.

Device does not spray or spraying is irregular!

- Check liquid level and fill up if necessary.
- Check whether the motor is running (motor-pump unit).
- Check all liquid lines/tubes for air bubbles and correct connections.
- If the measures taken are not successful, contact the customer service (see type plate p. 01 / item. **13**)
- The red nozzle on the pump is clogged. Push the pump upwards from the bottom. Remove the red nozzle and clean the small hole of the spray opening with a fine needle. Replace the red nozzle and adjust the correct spray jet by screwing it on more tightly or more loosely. Finally, place the pump back in the bracket.

The liquid quantity in ml is too high or too low!

- adjust spraying time / spraying quantity by means of push button C (see p. 13 / item C)

QUESTIONS & ANSWERS

How is the device powered!

- The device is powered by a battery.
- The device can be operated with a battery or with the charger plugged in to a power outlet. The battery will power the device even in case of a possible power outage.
- The device can also be operated with an external mains adapter without a battery. **In this case, the battery must be removed because otherwise it would be destroyed due to the overcharge.** Connect a new mains adapter to the charging socket.
- The customer can purchase an additional replacement battery incl. charger cable (item no. 11190) in order to charge the battery in the office or the utility room.

Recommendation: You can avoid malfunctions if you charge the battery of the device every 4 weeks for 24 hours (for c. 100 use cycles per day).

The device is dripping constantly!

- The valve must be replaced. Request a new valve or contact the service hotline (see type plate p. 01 / item **13**)

Liquid is leaking from the device!

- Medical pad (item no. 12020 - VE 6 pcs.) in the collecting pan is no longer absorbent and must be replaced.

Recommendation: Replace the pad after 3-4 liquid bottles (or at least every 2 months).

Device cannot be charged anymore!

- Contact our service at service@steripower.de or **+49 (0)8151 / 555 15 27**

The device sprays without a hand being inserted!

- Contact our service at service@steripower.de or **+49 (0)8151 / 555 15 27**

Operating instructions for the lead charger

E

TECHNICAL DATA

- for 12V lead (Pb) batteries
- electronic protection against reverse polarity
- electronic protection against overcharge
- electronic protection against short circuits
- charging according to IUoU-characteristics
- automatic recharge - trickle charging
- charger can be used internationally (100-240VAC)

LED

The LED signals the following conditions:

LED lights up red: in case of reverse polarity

LED lights up green: during charging, goes out when charging process is complete

CAUTION

Only charge rechargeable lead batteries; risk of explosion if other batteries are used!
Make sure the contacts of the 12V lead battery are connected with the correct poles

CABLE SOCKET ADAPTER

Connect the adapter cable to the charging plug of the device. Connect the cable sockets to the lead battery with the correct polarity. Connect the black cable terminal with the negative (-) pole and the red cable terminal with the positive (+) pole.

Plug the device into the mains socket. The charging process will start automatically when it has been correctly connected. The LED lights up green and indicates the charging process. When the process is complete, the LED goes out. After the charging process, the battery will be buffered with trickle charging. The battery can be disconnected from the charger, when the charger has been disconnected from the mains.

STANDBY AND PARALLEL OPERATION WARNING

When lead batteries are charged, explosive gases can form.
Make sure that the room is sufficiently ventilated and avoid fire or open flames.

CARE

Only clean the device after it has been disconnected from the mains.
The device should only be cleaned with a dry cloth. Do not operate the device if the housing or the power plug is damaged. In case of defects please contact an authorized dealer or **service@steripower.de**

SAFETY WARNING

The charger must only be used indoors and in dry surroundings.
The device must be protected against contact with water in order to avoid the risk of fire or electric shock.

SERVICE

eMail: Service@steripower.de

telephone: +49 (0)8151 555 15 27

or contact your authorized dealer

STERIPOWER GmbH & Co. KG
Schiffbauerweg 1 • D-82319 Starnberg
www.steripower.de • info@steripower.de

Steripower®